



MetricTrade Mobile **Version 1.1**

Contents

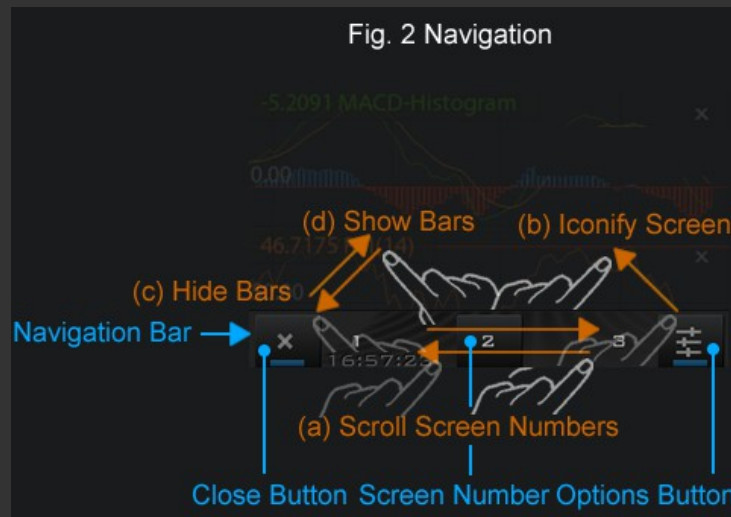
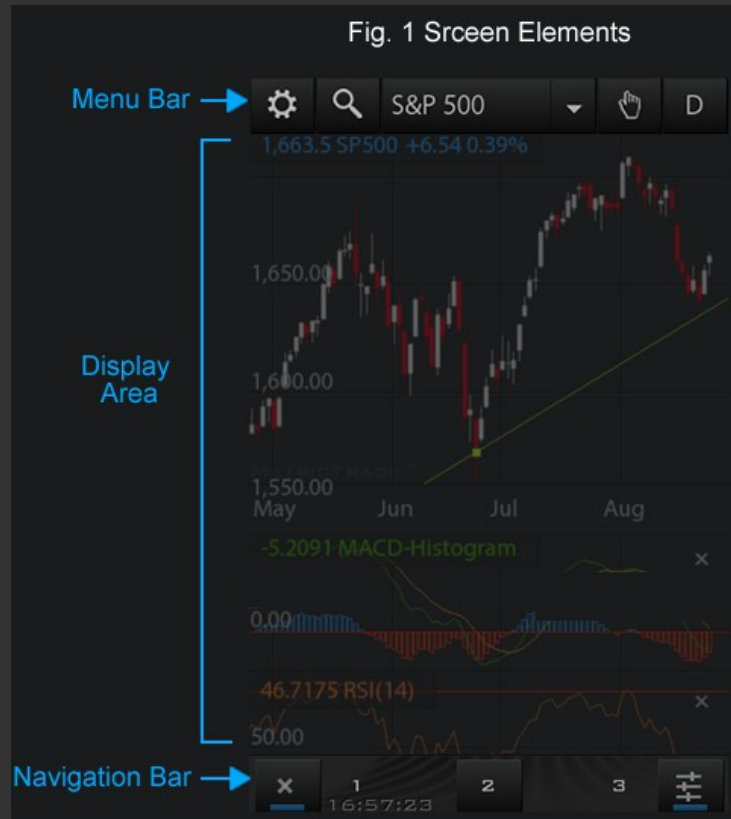
1. Navigation
2. Application Status
3. Settings
4. Stock Listing
5. Portfolios
6. World Indexes
7. Technical Analysis
8. Alerts

1. Navigation

The application is organized into 12 screens, the content of which is defined by the user.

Switching screens is done in the following ways:

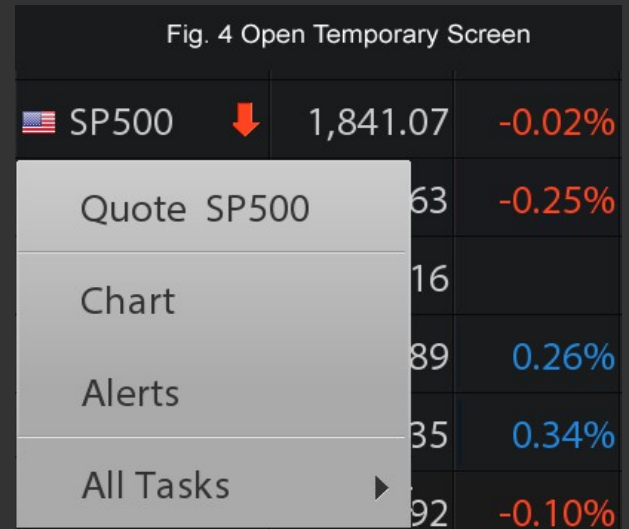
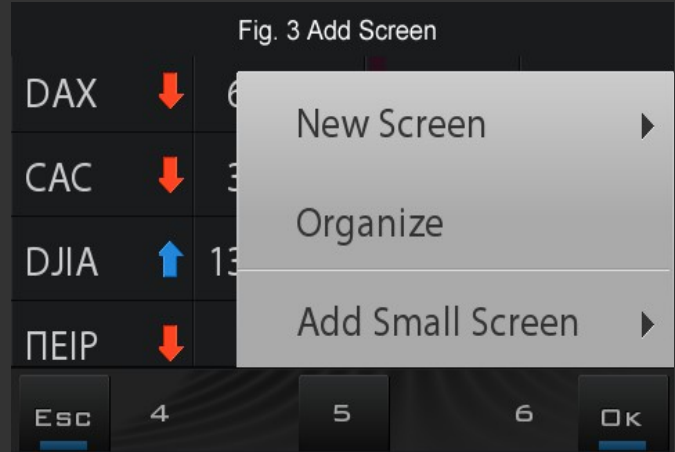
- (a) by clicking on the corresponding screen number. The Navigation Bar can be dragged left or right to move easily to the number we want.
- (b) by dragging the bottom right corner of the screen inwards. With this function (**Iconify Screen**) all screens are displayed in miniature and you can change order by dragging them to another location, or delete them by dragging them onto the recycle bin.



The **Navigation Bar** can be eliminated to save space or reappear by dragging the bottom left corner of the screen outwards (c) **Hide Bars** or inward (d) **Show Bars**. Adding a new screen is made from the Settings Button by selecting **New Screen**. On some devices (more than one size) there is the option to have a small screen below the main (**Add Small Screen**).

When we click on a symbol from the available options, we can open a Temporary Screen. A Temporary Screen can either be closed with the close button or added to the main screens from the Options button by selecting Screen.

Μονιμοποίηση Οθόνης.

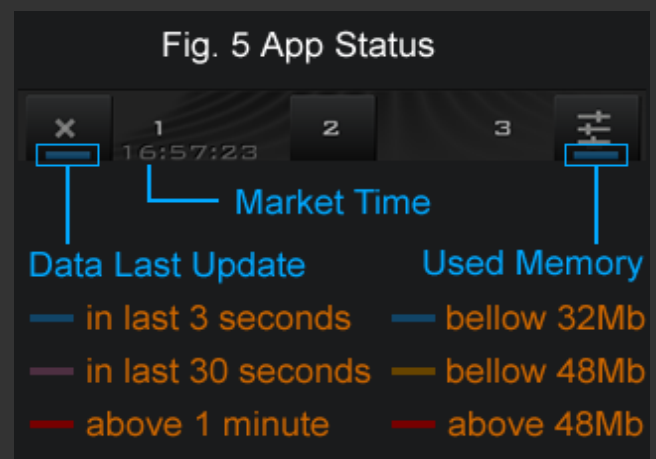


2. Application Status

At the bottom of the navigation bar there are information about the status of the application. The Connection Status changes color from blue (the last update was a few seconds ago) to red (the last update was 1 minute ago).

The Market Update Time shows the time of last update based on the time of purchase.

The memory indicator shows memory used by the application. The operating system gives each application about 32Mb. When the used memory exceeds a certain threshold (about 60 Mb), the operating system may stop meeting the demands of the application for additional memory and the application can not function properly, without always informing the user about it.



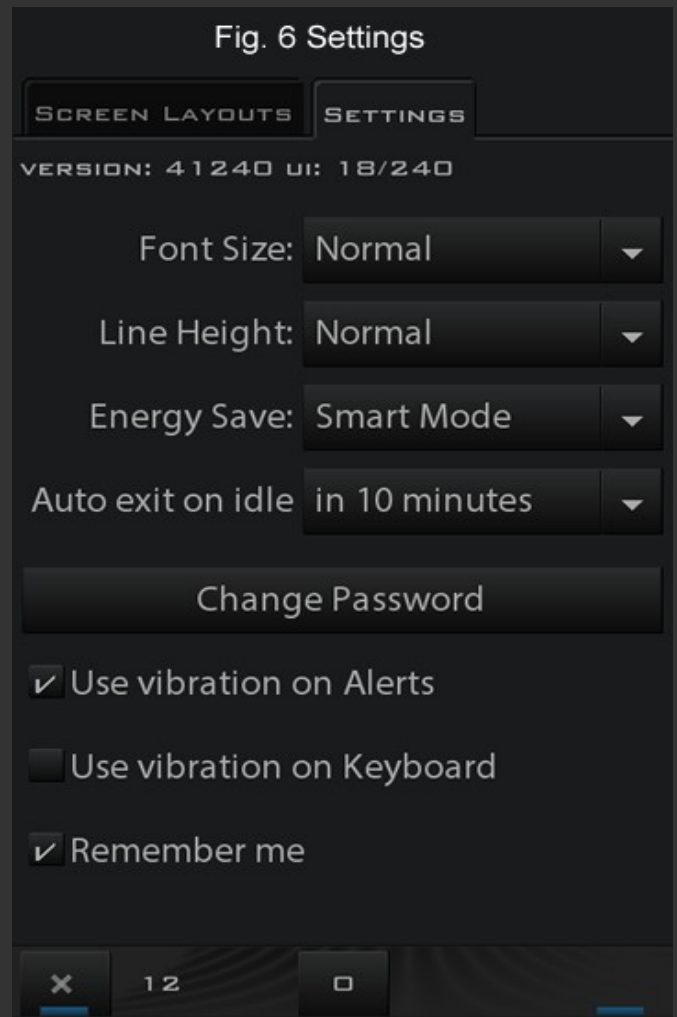
3. Settings

Before using the application it is good to see how it can be adjusted to better meet your needs.

The settings screen can be opened from the Organize menu by selecting the Settings screen thumbnail.

The settings include:

- a. Font Size : You can set the font size to Small / Normal / Large / Larger to make it easier to read.
- b. Line Height : Changing the line height, automatically increases the size of the buttons so you can press them easily.



- c. Energy Save: You can reduce or increase the update rate of the application from 1 second to 4 to increase or decrease the battery consumption and the amount of data you download. You have the following options:

- (i). Smart

With this option, the application automatically vary the update rate from 1 to 4 seconds, depending on whether you use it or just watching it, the type of your internet connection and depending on whether you are running on battery or you are connected to a charger.

- (ii). Always Economic

With this option, the update rate varies from 2 to 4 seconds and only depends on the type of the internet connection and if you are running on battery or you are connected to a charger .

- (iii). Not Economic

With this option, the update rate is always 1 second.

The battery consumption is mainly affected by the type of connection (3G connection consumes 3x energy than WiFi connection), and secondarily by the screen switching and movements of the user through the screens.

d. Auto exit on idle

The application closes automatically after the time specified in the option 10 minutes / 1 hour / 2 hours to stop consuming energy and data.

Under a battery level (30%) it will ignore this option and will be turned off after 10 minutes of inactivity.

e. Change Password

Use this option to change your password.

f. Use vibration on Keyboard

If it does not bother you let vibration inactive, as it consumes a significant amount of power during use.

g. Use vibration on Alerts

You can enable or disable vibration when viewing a new alert.

All of the above settings are related to the particular device and are not transferred like the other elements of your choices.

4. Stock Listing

In the [Edit List](#) button you can create new stock lists, add or remove stocks in them or change the order of stocks on the list.

Clicking on the [Select List](#) group you can choose another list.

With the [View Trading](#) button you select the set of columns to view the negotiation or set of columns to display the pre-opening or closing phase.

Similarly, with the [View Performance](#) button you choose the set of columns for displaying performance or display of fundamentals.

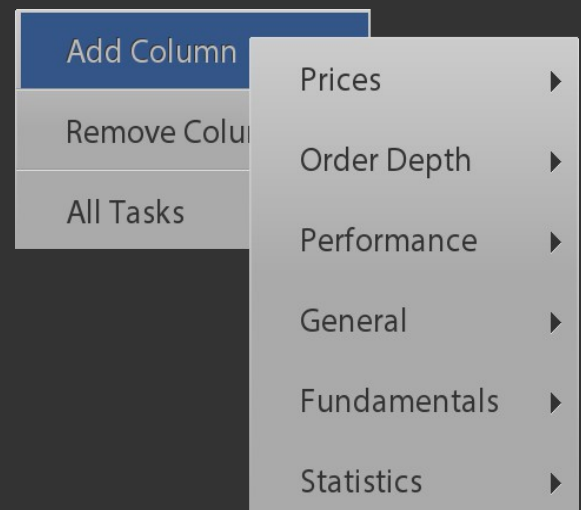
All columns can be customized to your liking.

Click the name of a column to remove or add a new column. Drag the name of the column left or right to alter its width.

By clicking on a symbol you can open one of the symbol options.

Fig. 7 List View

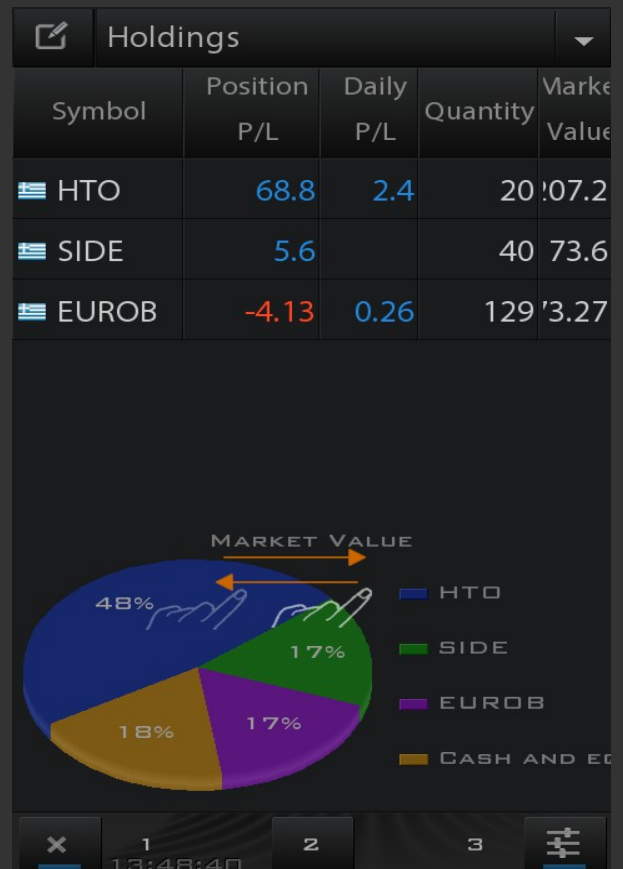
	Symbol	Price	Change%	Volume
☰	ETE	4.10	-0.49%	774,978
☰	HRAK	1.30	-3.70%	6,000
☰	PPC	11.00	1.08%	104,646
☰	HTO	10.24	1.39%	515,171
☰	ATG	1,205.51	0.05%	3,664,992
☰	EUROB	0.566	1.80%	1,160,188
☰	SIDE	1.84	1.10%	31,344
☰	SOLK	2.27	0.89%	35,917



5. Portfolios

In the Portfolios screen you can enter quantity and price of a portfolio to have a valuation of your positions.

You can drag the graph of the distribution left and right to see returns and cumulative amounts of valuation and profits / losses.



6. World Indexes

The World Indexes screen is a custom view to see aggregated the main indexes (World Indexes) and currencies (World Currencies) with different columns than in stocks.

You can also add indexes to your lists by selecting the section Foreign Markets (ind) on the right of the keyboard or after the name of the index to put the patch .ind e.g.: DAX.ind

7. Technical Analysis

In technical analysis of the application you can see live charts in periods 5/10/30/60 minute/day/week/month for time intervals of 120 days for intraday data ,5 years for daily and 20 years for monthly.

You can add indexes and moving averages by choosing **Settings**.

Change the symbol by clicking on its name or selecting search (**Find/Select**).

Change the periods by the option **Period**.

By selecting Mode you can switch to the information state or drawing lines.

Zoom or unzoom the graph by using two fingers (convergence-divergence) or move it left / right.

Click on a line or index to change its parameters or color or add a moving average on it.

You can save the set of indexes on the screen as a template by choosing **Settings** -> Save Template, so that each new chart to open with the current set of indexes.



Relative Strength (x)

Periods 18

Color: ▼

Weight: ▼

Moving Average ▼

8. Alerts

In the Alerts screen you can put alerts on whether a title is above or below a price.

You can also add a comment that will be displayed along with the alert.

From the application settings (paragraph 3), you can enable or disable vibration accompanying the appearance of an alert.

CAUTION: Alerts do not work when the application is not running.

ALERTS

Symbol	Symbol
DJIA	SP500
SP500	Type
HTO	over
	Price
	2010.0
	Comment
	ok for this year
	Update
	Remove

Bottom navigation bar: 1 (Home), 2 (Search), 3 (Alerts), 4 (Settings)

Time: 15:13:35

